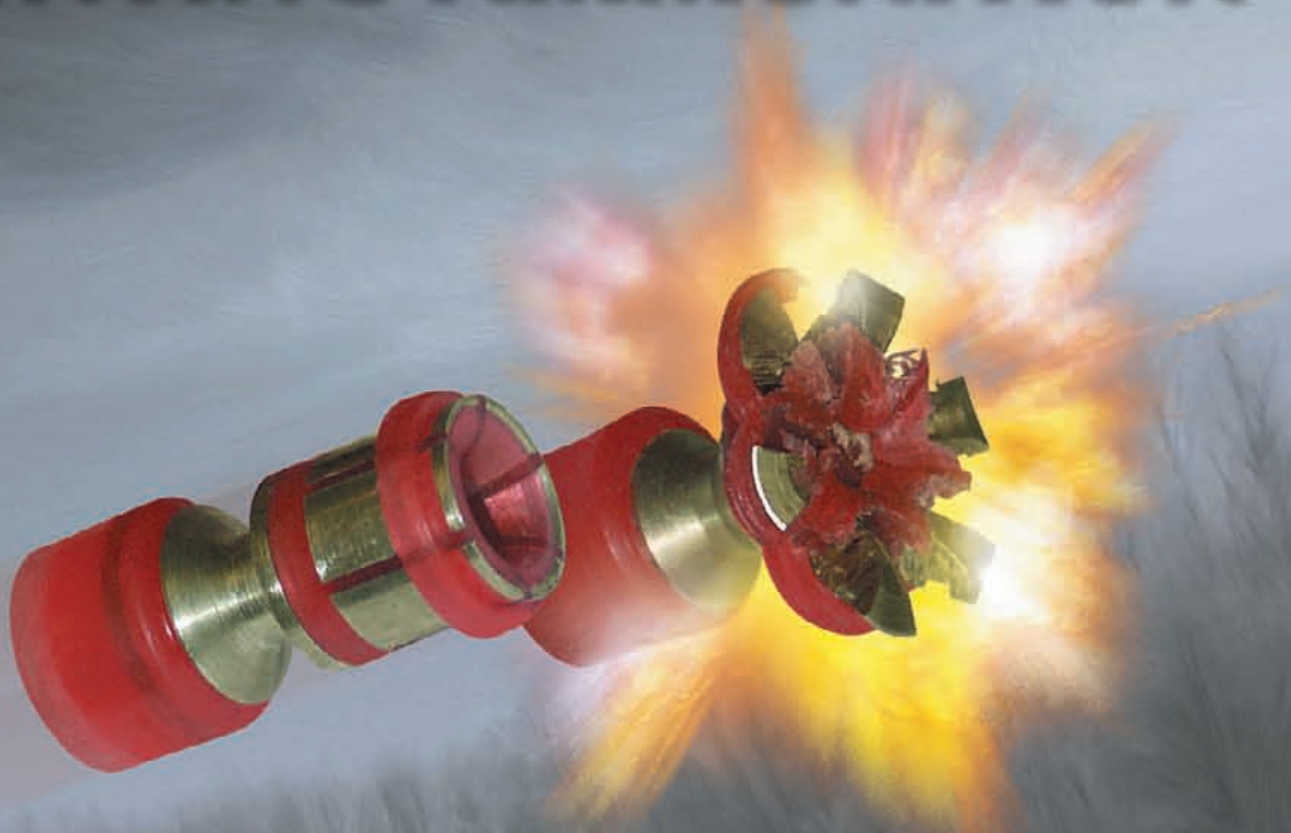


NEXT GENERATION HUNTING AMMUNITION



DDUPLEKS

www.ddupleks.lv

MONOLIT 28 – excellent ammunition for medium and big game hunting with flat trajectories and excellent precision at all ranges. The extra advantages of **MONOLIT 28** ammunition are grass and bush penetration without any slug deviation from the trajectory of flight and huge concentrated stopping power. In the body of a game animal the 28.4 gram slug punches a clean, circular entrance hole and leaves a clean wound without any splinters. Its special material and shape reduce the possibility of ricochets. For target shooting the best precision results can be achieved if fired from a barrel with full choke.



MONOLIT 32 – gives big game hunters the accuracy and tremendous striking power needed for sure kills at longer ranges. The extra advantages of **MONOLIT 32** ammunition are increased penetration ability and increased concentrated stopping power. 32 gram **MONOLIT** slugs ensure quick and clean game kills. After shooting with **MONOLIT** slugs shotgun barrels are always clean – no lead sediment on the barrel. The new **MONOLIT** slug series have been created for precision and effectiveness, giving the hunter the opportunity to make optimum use of his shotguns and combined guns.

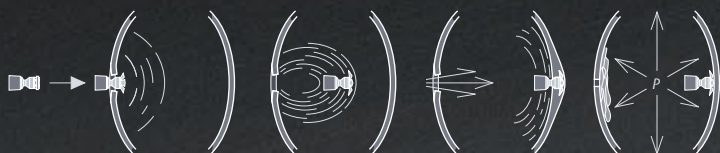


- The main body of the slug is made of turned steel of a particular brand, which allows better ballistic results due to the material's resistance to deformation.
- Deformation-resistant material ensures higher precision at longer ranges.
- The slugs shape, precise balance and ideally located centre of slug gravity ensure high-precision hits.
- The special polymeric component parts ensure minimal friction and infallible passage of the slug through the barrel and any type of choke.
- During the flight, the wad stabilizes the slug precisely with the nose forward.
- The slug penetrates such obstacles as bushes and branches in its flight, maintaining its initial direction, due to the bullet material and the balanced position of both the main body of the slug and the wad-stabilizer.
- The slugs possess high stability in flight and minimize the possibility of ricochets.
- The flat nose facilitates the intensification of impact force in the moment of impact.
- The metal surface of the slug is covered with a protective layer and is thus not exposed to corrosion.
- The slug contains no heavy metals, does not pollute the environment and creates no fouling in the bore.
- The weight of the slugs MONOLIT 28 (28.4 g) and their flight trajectories have been adjusted to conform to the current C.I.P. standards for hunting slugs ammunition.
- The slug's material and shape increase its stopping effect, ensuring a quick and clean game kill.
- In the body of a game animal the slug punches a clean, circular entrance hole and leaves a clean wound without any splinters.

10 shots in 50 m
 Ø 4.5 cm
 Monolit 28



DUPO 28 – excellent ammunition for big game hunting. The slug produces a big 30 mm expansion effect at the first moment of impact and completely splits into 6 regular splinters and the back part of the slug, delivering all its energy to the body of the target. The slugs are resistant to different small obstacles like grass or small bushes, expansion occurs only in the body of the target. Nowadays, one of the most precise slugs with great power and expansion.



ROSSA 32 – DDupleks' most accurate slug for long distance big game hunting. Its weight favours high power, reach and precision, and its 27 mm expansion guarantees great stopping power in a local area. In the body of a game animal the 32 gram slug punches a clean entrance hole and leaves a clean wound without any splinters.

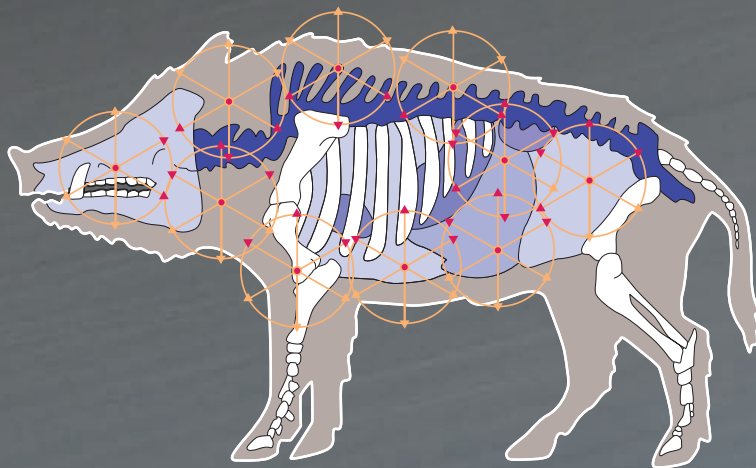
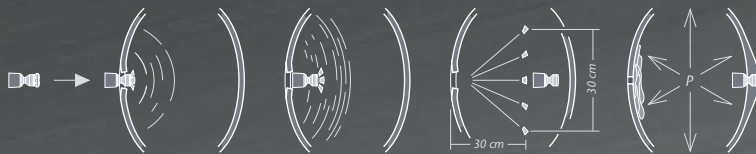
- The high hit precision and longer shooting distances are attained due to the specially centred body of the slug.
- The body of the slug is made of metal of a particular brand, which deforms easily when entering the body of the game animal.
- Controlled deformation and special design ensure maximal effective energy transfer at the moment of first impact.
- Due to the complicated construction and its controlled slug deformation, the slug expands only in the body of the game animal.
- The increase of the impact surface of the slug in the first moment of the hit to 1.5 to up to 2 times more ensures a complete loss of vital energy in the game animal's body.



- In the moment of the hit, an increased-diameter slug makes a strong impact on the body of the hunted animal by creating an effect of high air pressure on its respiratory organs, blood circulation and nerve systems.
- The slug possesses high stability during flight – always with its nose forward, due to the balanced position of the mass and the wad-stabilizer.
- The slugs contain no heavy metals and create no fouling in the bore.
- The body of the slug is not exposed to corrosion due to the protective layer that covers its surface.
- The polymeric component parts ensure minimal friction and reliable passage of the slug through the barrel and any choke.



HEXOLIT 32 – the newest expanding slug with the world's largest expansion (36 mm), which ensures extremely high stopping energy designed for big game targets. The slug provides a complex instant effect with rapidly-increasing forepart surface area and performs wide and powerful fragment impact on splitting. The specially-constructed splitting forepart of the **HEXOLIT 32** provides united dual high-powered effect. The slug's main body (20g) provides the basic impact and the regular 6 bullet fragments (2 g each) cause wide-area organ and tissue damage. Even if the game is not hit precisely, in a situation in which classic lead ammunition would wound the animal and allow it to escape, **HEXOLIT 32's** 6 regular splinters and the remainder of the slug will cause wide-range lethal damage. Some of the fragments will reach vital organs and prevent the wounded animal escaping, but at the same time will not cause unnecessary wastage of game flesh. **HEXOLIT** series slugs are lead free and do not cause barrel fouling. The best ammunition to date because of its precision and effectiveness. With a high-quality finish, it is the best choice for the most demanding hunters.



- Special alloy metal – ensures higher precision and longer ranges
- Controlled deformation and special design – ensure maximal effective energy transfer at the first moment of impact
- Dual stopping effect – hitting the game in a dense part of the body (stomach) creates
- 6 regular splinters with increased energy, hitting in a less dense part causes the bullet to achieve a 36 mm unfolded forepart
- Special shape – reduces ricochet possibility
- Environmentally friendly – slugs are lead free, no heavy metals
- Always clean barrels – no lead sediment on barrel
- Quick and clean game kill – slugs material and shape increase stopping effect, preventing the wounded animal escaping

HEXOLIT 32 splinters will reach vital organs and result will be lethal even in case when animal is wounded in less vital area.

DDUPLEKS
www.ddupleks.lv

DDupleks Ltd. Brivibas street 197
Riga LV 1039, Latvia
Phone +371 67 27 21 82, fax +371 67 27 17 97
e-mail: info@ddupleks.lv